



# 骨灰植存葬

ASH BURIAL





## 何谓骨灰植存葬？

所谓植存，就是当人离世后，以火化的方式将大体化成骨灰，骨灰研磨再处理，于专区内将骨灰植入土坑里再覆盖表草土。

不做永久的设施也不作任何记号、不放进骨灰塔，亦不立碑、不造坟。

「让大体化作春泥、回归大地，避免环境的破坏，节省土地资源，提升殡葬文化及人文精神内涵。」。

## What is Ash Burial?

Ash burial, is a method of green burial, referring to the process where the deceased's remains are cremated, and the ashes are finely processed. These ashes are then planted into a designated area, covered with topsoil and allowed to return to the earth.

No permanent structures, markings, columbariums, tombstones, or any form of memorialization are created. The goal is to let the remains blend into nature, promoting environmental preservation, conserving land resources, and enhancing the cultural and human element of funerary practices.

# 骨灰植存葬概述

## Ash Burial Overview



- 火化后的骨灰将研磨成粉末状。
- 钻一个直径 15 厘米、深度不小于 60 厘米的洞。
- 将粉末状的骨灰植入土坑内后，重新填满土坑。
- 重新铺上草坪。
- 不允许使用任何标记。
- 不允许举行宗教仪式。
- 整个生命礼仪过程在 30 分钟内完成。

- The cremated ashes are processed into a fine powder.
- A hole is dug into the ground with a diameter of 10cm and a depth of at least 80cm.
- The powdered ashes is poured into the hole and covered with the surrounding soil.
- Grass is replanted over the area.
- No markers or symbols are allowed.
- Religious ceremonies are not permitted.
- The entire process is completed within 30 minutes, ensuring a swift and efficient ceremonial experience.

# 环保愿景

Environmental  
Conservation Vision



## 自然环保

- 不破坏自然景观，保持生态环境平衡，与自然生态共存共荣。
- 土地循环利用，不造成后代负担。
- 骨灰植存后，回归大地，化作春泥更护花。

## Natural Environmental Conservation

- Preserving the natural landscape, maintaining ecological balance, and coexisting harmoniously with nature.
- Utilizing land in a sustainable manner, minimizing the burden on future generations.
- With ash burials, one returns to the earth, nourishing the flowers like spring soil.

## 礼仪环保

- 庄严简洁的植存流程，没有任何宗教仪式，没有香烛冥纸供品，没有传统礼俗的繁文缛节，以一份至诚的心，祝福往生者放下万缘，自在的回归天地。

## Eco-Friendly Ceremony

- A solemn and simple ash burial process, without any religious rituals, no incense, candles, or paper offerings, and without the elaborate customs of traditional ceremonies. With a sincere heart, we wish for the departed to let go of all attachments and peacefully return to nature.

## 生活环保

- 没有传统殡葬风俗惯见的铺张浪费，减少人对土地资源的占用，并且顺应自然、返璞归真，实践了节葬、简葬、洁葬的精神。

## Eco-Friendly Lifestyle

- Free from the traditional extravagant practices commonly seen in funerals, it minimizes the use of land resources and embrace a natural yet simple approach. It embodies the spirit of frugality, simplicity, and cleanliness in funeral practices.

## 心灵环保

- 不设墓塚，不立墓碑，不设立一切外在形式，对死亡不恐惧，让人学会欢喜自在看生死，心灵永保纯净与安定。

## Mental & Spiritual Well-being

- No graves or tombstones are constructed, detaching from all external forms. There is no fear of death, and it teaches people to joyfully embrace life and death. This approach aims to maintain the purity and tranquility of the soul.



# 生命礼仪流程

Ash burial process



火化后捡骨  
Cremation and  
collection of ashes.



骨灰研磨  
Ground into powder.



装进容器里  
Packaged into container.



礼仪师向家属讲解流程  
Breifing to the family  
of burial process.



前往植存园区  
Go to Eco Burial Garden.



最后道别  
Final farewell conducted.



由3名家属进行仪式  
3 family members invited  
to bury the ashes.

# 生命礼仪流程

Ash burial process



置入骨灰  
Ashes poured into  
the hole.



献花  
Flowers are then offered.



覆土  
Hole is then fill up with soil.



礼成  
Ceremony completion.



致以最后的敬意  
Pay last respect.

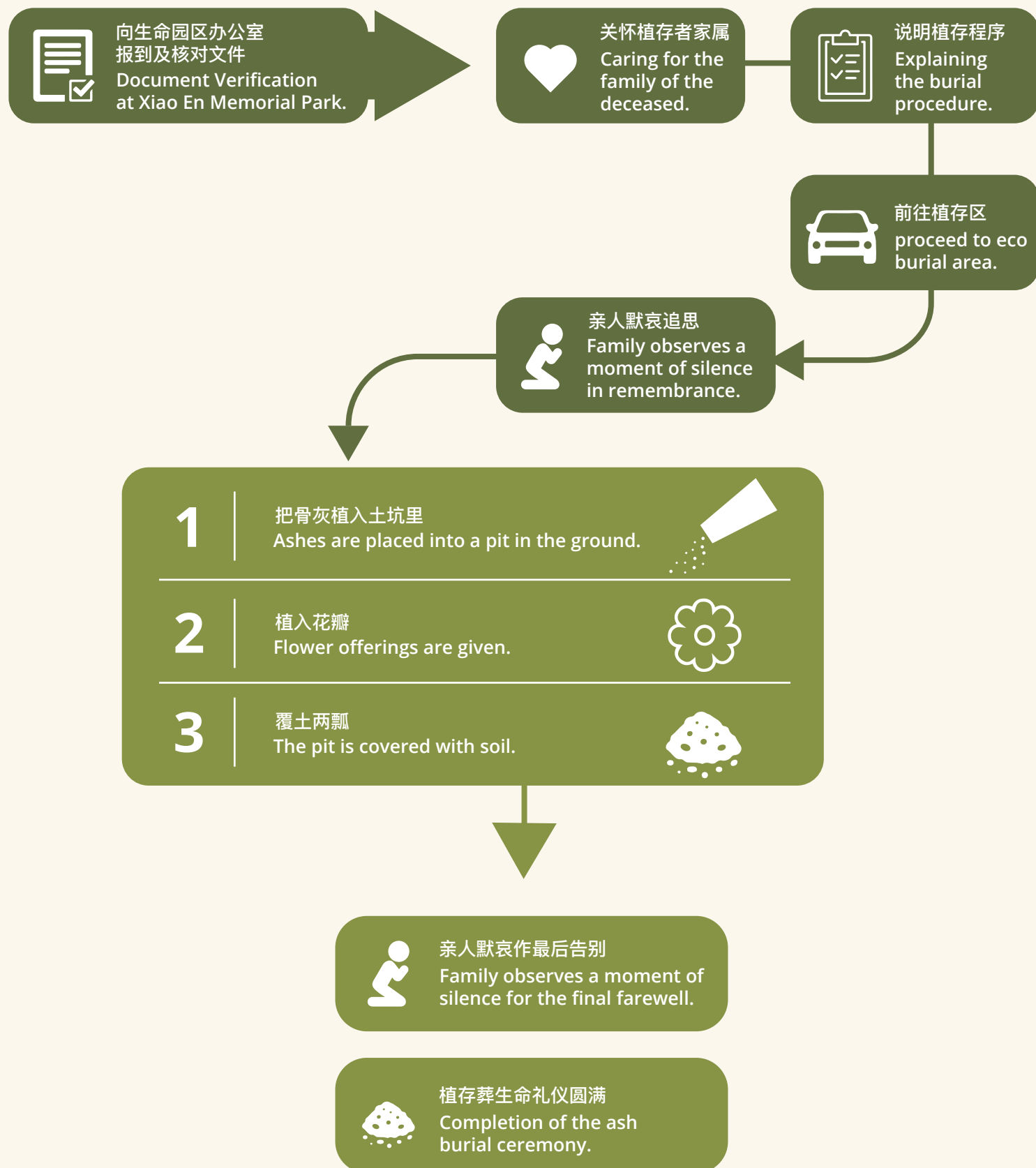
# 孝恩植存葬申请流程

Application process to Xiao En Group



# 骨灰植存日流程

Ash burial day schedule





# FAQ 常见问题

## 1) 什么是骨灰植存葬？

所谓植存，就是当人离世后，以火化的方式将大体化成骨灰，骨灰再进行研磨处理，于专区内将骨灰植入土坑里再覆盖表草土。不做永久的设施也不作任何记号、不放进骨灰塔，亦不立碑、不造坟。

## 2) 骨灰植存葬每次可以植葬多少位先人？

每个骨灰植存葬穴位仅可植葬一位先人。

## 3) 当完成骨灰植存葬仪式后，能否取回先人骨灰吗？

骨灰植存葬后先人的骨灰将与大自然尘土融为一体，所以是无法取回先人骨灰。

## 4) 园区内能否点香/焚烧祭品？

植存园区内是不允许点香/焚烧祭品等宗教祭拜仪式。

## 5) 骨灰植存葬是否适合所有的宗教信仰和种族？

骨灰植存葬过程不涉及任何宗教仪式。除了穆斯林，任何人都可以跟随自己的意愿选择骨灰植存葬。

## 6) 下葬后能不能迁葬？

骨灰植存葬后先人的骨灰将与大自然尘土融为一体，所以无法进行迁葬。

## 7) 骨灰植存葬能不能立碑，以方便后人来拜祭？

不能。骨灰植存葬的宗旨是要减少对土地资源的占用，不造成后代负担，让人自在看待生死。

## 8) 治丧后，能否直接进行骨灰植存葬仪式（生命礼仪）？

大体火化了之后，家属必须预约另一个时段来进行骨灰植存葬仪式（生命礼仪）。

## 9) 可以选择园区里的下葬土坑位子吗？

不能。所有的骨灰植存会依照顺序进行植存葬，无法挑选位子。

## 10) 是否能够选择其他习俗的下葬仪式？

不能。骨灰植存葬讲究庄严简洁，所以过程不涉及任何宗教仪式，顺应自然，返璞归真，实践节葬、简葬、洁葬的精神。

## 11) 能否在植存葬的草坪上种花 / 种树？

不能。仅会覆盖表草土，在一段时间后会翻土再循环使用。

# FAQ

## Frequently Asked Questions

### **1. *What is ash burial?***

Ash burial is a process where the remains of a departed person are cremated, and the resulting ashes are finely ground. These ashes are then placed into a pit in a designated area and covered with topsoil. No permanent structures, markers, columbarium, gravestones, or tombs are created.

### **2. *How many person's ashes can be buried each time in an ash burial pit?***

Each ash burial pit can only accommodate one person.

### **3. *Can the departed's ashes be retrieved later after the ash burial is complete?***

No. This is because after the ash burial, the departed's ashes will become one with the earth, blending into nature, and cannot be retrieved.

### **4. *Is lighting incense or burning offerings allowed within the park area?***

Lighting incense, burning offerings, and other religious rituals are not allowed within the ash burial area.

### **5. *Is ash burial suitable for all religious beliefs and ethnicities?***

The ash burial process does not involve any religious ceremonies. Except for Muslims, anyone can choose ash burial according to their own wishes and beliefs.

### **6. *Can the burial site be relocated after the burial?***

No. This is because after ash burials, the departed's ashes will blend with the natural soil, making it impossible to relocate the burial site.

### **7. *Can a memorial stone be erected for ash burials to facilitate future generations to pay respects to?***

No. The purpose of the ash burial is to reduce the use of land resources and not burden future generations, allowing people to have a more relaxed perspective on life and death.

### **8. *Can the ash burial ceremony be performed directly after the funeral?***

After the body is cremated, the family must make a separate appointment to conduct the ash burial ceremony.

### **9. *Can we choose the burial pit location within the park?***

No, you cannot. All ash burials are carried out in sequential order, and it is not possible to choose a specific plot.

### **10. *Can we choose other burial customs be observed to go with ash burials?***

No, you cannot. The ash burial emphasizes solemnity and simplicity, and therefore does not involve any religious rituals. It follows the principles of returning to nature and practicing a minimalist, clean approach to burial.

### **11. *Can we plant flowers or trees on the lawn of the ash burial site?***

No, you cannot. The ash burial site only covers the top layer of soil with grass, and after a certain period of time, the soil will be turned over and recycled for future use.